

# Thrax Yatrus

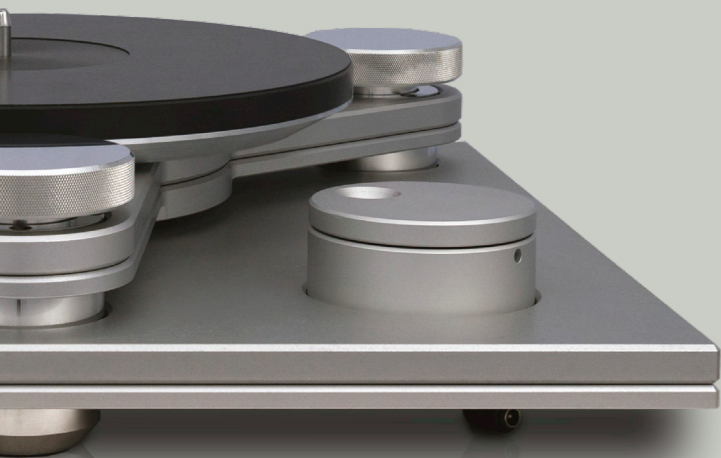
## Direct Drive Turntable



The analog source you have been waiting for is here today.  
Yatrus is the turntable to challenge the dynamics of any digital source.  
The extraordinary low energy reflection reveals a new layer of Information.

### Features

- Unique vibration-free direct drive brushless DC motor with integrated bearing for the smoothest possible motion
- Electronically controlled hyper stable speed for extremely steady motion
- Multilayer platter with special damping for best record interface and vibration control
- Fully integrated all in one piece - no external boxes and controls
- Ultra low-resonance adjustable suspension system isolating the table from its environment
- Support for all common speeds 33/45/78 rpm
- All anodised aluminium construction with constrained layer damping



### Technology

The steady growth of Analog replay and the introduction of ever more complicated replay systems set us on a task to pack all the performance achievable today with a most desirable quality called user friendliness.

Turntables are often set in sub-optimal conditions lacking purpose-built racks and vibration-free supports, so we implemented a high loss low-resonance integral support system in the Yatrus allowing you to use it on any furniture in your home while still preventing vibrations from reaching the platter/cartridge interface.

Yatrus uses a maintenance-free drive system. No need for regular speed adjustments, belt replacements

and so on. It is made to run forever. By the use of a direct-drive motor we eliminate multiple noise sources like belt knock and jitter, high speed motor vibration, multiple bearings chatter and so on. The result is a stunningly quiet drive system mounted on an inert rigid body with dampened rigid coupling to the arm-board manifesting as the most explosive dynamics and clean textures.

The Yatrus is designed for use with a single 9" tonearm.

The analog source you have been waiting for is here today.

### Specifications

#### Support

- Single 9" tonearm

#### Weight

- 24Kg

#### Available Finishes

- Silver or Black Aluminum

#### Dimensions

- R450W x 400D x 100H mm

#### Power

- 24V Power Supply
- 36W Power Consumption

